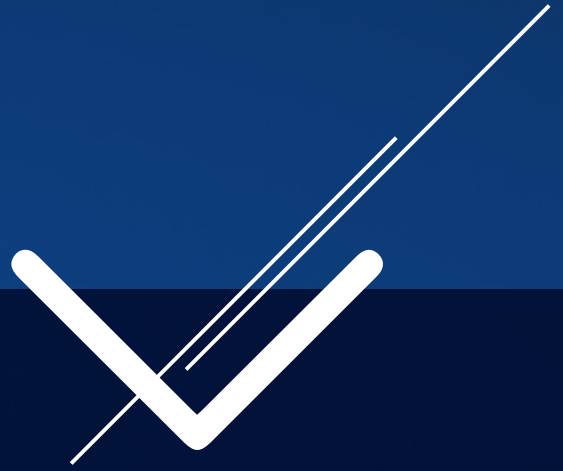


SPARE PARTS HOMELIFT HYDRAULIC PLATFORMS CABINS MOTORS CARCASS TYPES CONTROL PANELS BUTTONS
MANUAL DOORS SPARE PARTS CABIN DOORS MANUAL DOORS SPARE PARTS CABIN DOORS MOTORS CARCASS TYPES CONTROL PANELS
CABINS MOTORS CARCASS DOORS MANUAL DOORS SPARE PARTS CABIN DOORS MOTORS CARCASS TYPES CONTROL PANELS
MANUAL DOORS SPARE PARTS CABIN DOORS MANUAL DOORS SPARE PARTS CABIN DOORS MOTORS CARCASS TYPES CONTROL PANELS



↴
**PRODUCT
CATALOG**



About us

Hatem Lift began its activities in 1995 with the production of lift cabins and automatic doors, lift packages with its successful history and its upward trend.

In the production of automatic lift doors, emerges as a value in the industry. Behind the success achieved, there is a management approach focused on the customer and focused on efficiency.

This approach not only delivers financial gains, but also an understanding that focuses on customer satisfaction.

The difficult conditions of the lift market and the different requirements and expectations of our customers that have increased awareness make it necessary for us to improve the range of products and services.

Hatem Lift Ascenseurs meets the requirements and expectations of the lift market with an experienced and objective view.

It achieves high customer satisfaction with the dynamic, creative and innovative approach to create a long-term customer instead of making a daily collaboration.

Hatem Lift has a European technology with more than Ving Five years of experience in manufacturing and developing new products of worldwide renown.

Hatem Lift designs according to European standards and norms to ensure a product of consistent quality ,

Our values and principles are essential to provide high quality, obtain the loyalty of our customers.

À propos de nous

Hatem Lift a commencé ses activités en 1995 avec la production de cabines d'ascenseurs et portes automatique , paquets d'ascenseurs avec son histoire réussie et sa tendance à la hausse.

Dans la production de portes d'ascenseur automatiques, émerge comme une valeur dans l'industrie. Derrière le succès obtenu, il y a une approche de gestion axée sur le client et centrée sur l'efficacité.

Cette approche non seulement grâce à des gains financiers, mais aussi avec une compréhension qui cible la satisfaction du client.

Les conditions difficiles du marché d'ascenseur et différentes exigences et les attentes de nos clients qui ont augmenté la sensibilisation rendent nécessaire pour nous d'améliorer la gamme de produits et services.

Hatem Lift Ascenseurs répond aux exigences et aux attentes du marché d'ascenseur avec une vue expérimenté et des objective.

Il obtient la satisfaction élevée de la clientèle à l'approche dynamique, créative et innovante pour créer une clientele à long terme au lieu de faire une collaboration quotidienne.

Hatem Lift possède une technologie européenne avec plus de Ving Cinq ans d'expérience dans la fabrication et le développement de nouveaux produits d'une renommée mondiale.

Hatem Lift Conçoit selon les standards et normes européennes dans les règles de l'art pour assurer un produit de qualité constante , Nos valeurs et nos principes sont indispensables fournir la haute qualité, obtenir la fidelité de nos clients.



معلومات عنا

بدأت شركة حاتم للمصاعد أنشطتها في عام 1995 بإنتاج كبائن المصاعد والأبواب الأوتوماتيكية ومصعد كاملة بتاريخها الناجح واتجاهها التصاعدي. في إنتاج أبواب المصاعد الأوتوماتيكية برزت كقيمة في الصناعة. وراء النجاح الذي تحقق، هناك نهج إداري يركز على العميل ويركز على الكفاءة.

هذا النهج لا يحقق مكاسب مالية فحسب، بل أيضاً فهم يركز على رضا العملاء.

إن الظروف الصعبة لسوق المصاعد ومتطلبات وتوقعات عملائنا المختلفة التي زادت من وعيهم تجعل من الضروري بالنسبة لنا تحسين مجموعة المنتجات والخدمات.

تلبية شركة حاتم للمصاعد أسنسيورز ومتطلبات وتوقعات سوق المصاعد برؤية موضوعية وذات خبرة.

فهي تحقق رضا العملاء بشكل كبير من خلال النهج الديناميكي والإبداعي والمبتكر لخلق عملاء على المدى الطويل بدلاً من التعاون اليومي.

تمتلك شركة حاتم للمصاعد تكنولوجيا أوروبية بخبرة تزيد عن 30 عاماً في تصنيع وتطوير منتجات جديدة ذات شهرة عالمية. تصمم شركة حاتم للمصاعد وفقاً للمعايير والقواعد الأوروبية لضمان منتج ذي جودة ثابتة قيمنا ومبادئنا ضرورية لتوفير جودة عالية، والحصول على ولاء عملائنا.

500+
Our Products

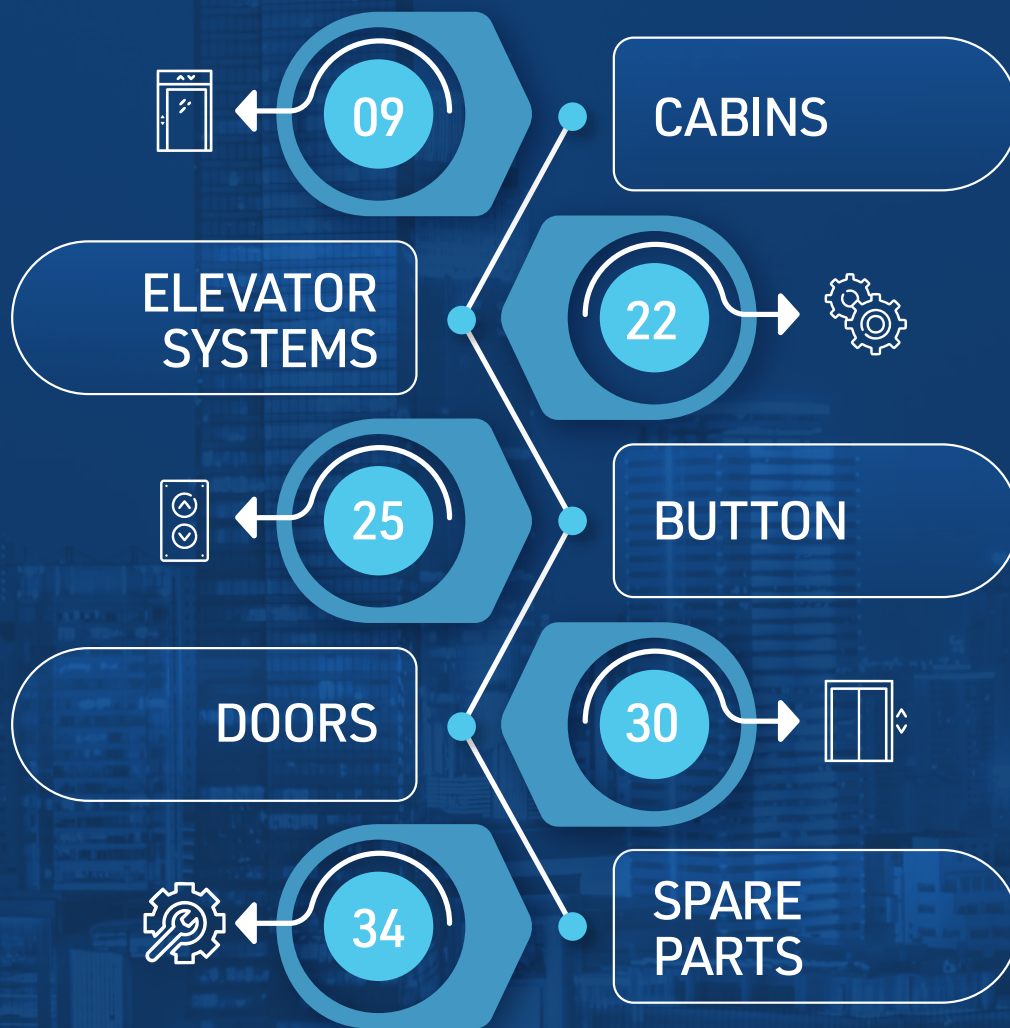
250+
Our Customers

30+
Country

100%
Quality



CONTENTS





BRINGING COMFORT TO EVERY FLOOR

Elegant design, silent operation, and high performance...
Our elevators make a difference on every floor.



'95
since

Reliable and Unique Quality at Every Height

95
SINCE



 **hatemlift**

→ www.hatemlift.com

 hatemlift



**CHOOSE YOUR
INTERIOR**



Cabins / Electrostatic Painted Cabinets



ANADOLU



OLTU

Cabins / MDF Cabinets



KULA



GARDENYA



Cabins /Stainless Steel Cabins



AYDER



SOFT



AZIZ



STYLE



Cabins / Panoramic Cabins



FIRAT



DICLE



NİL



ARAS



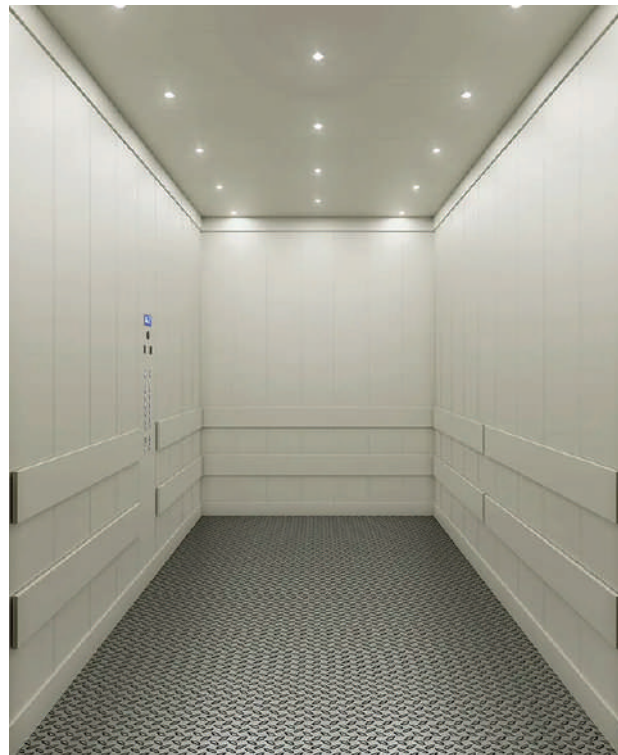
Cabins /Freight Elevator Cabins



CEYHAN



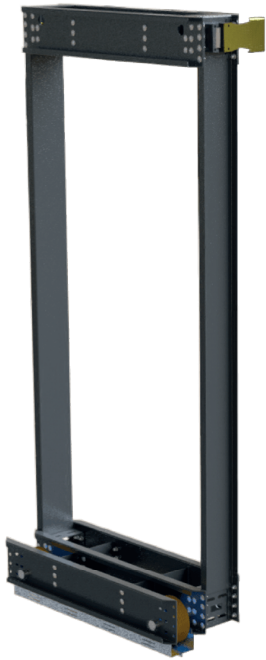
SEYHAN



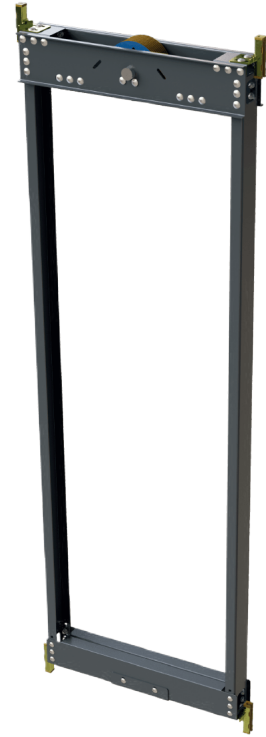
MENDERES



CARCASSTYPES



▼
Cabine Frame



▼
Counterweight Chassis



▼
C type Carcass



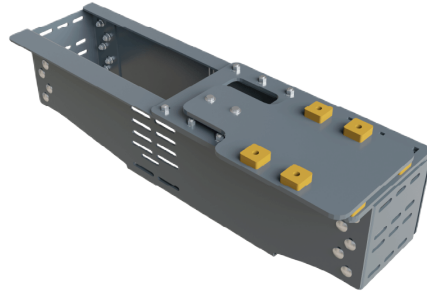
▼
L type Carcass



CARCASSTYPES

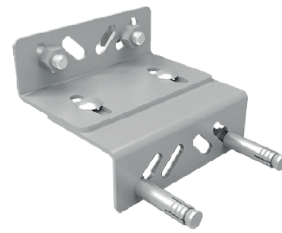


Counterweight Chassis



Counterweight Chassis

CONSOLES



**CHOOSE
YOUR PATTERN**

PRODUCT CATALOG



**SCAN THE
QR CODE**

www.hatemlift.com

LAMINANTE



HT-L1001 //



HT-L1002 //



HT-L1003 //



HT-L1004 //



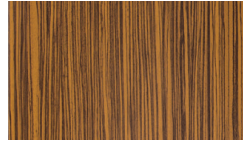
HT-L1005 //



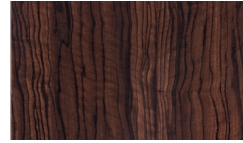
HT-L1006 //



HT-L1007 //



HT-L1008 //



HT-L1009 //

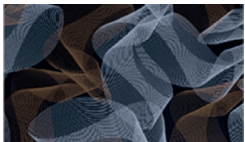
HT-L1010 //

HT-L1010 //

HT-L1010 //

HT-L1010 //

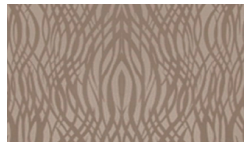
MEMBRAN



HT-MB01 //



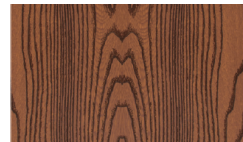
HT-MB02 //



HT-MB03 //



HT-MB04 //



HT-MB05 //



HT-MB06 //



HT-MB07 //



HT-MB08 //

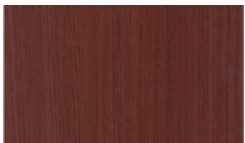


HT-MB09 //

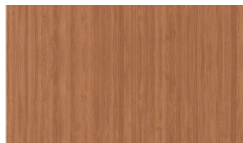


HT-MB10 //

HIGH GLOSS



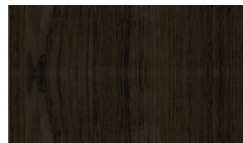
HT-HG01 //



HT-HG02 //



HT-HG03 //



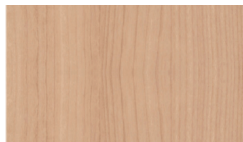
HT-HG04 //



HT-HG05 //



HT-HG06 //



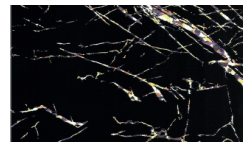
HT-HG07 //



HT-HG08 //



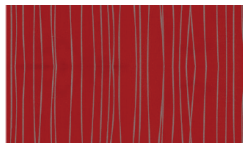
HT-HG09 //



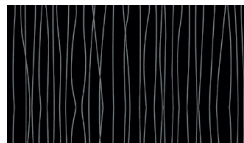
HT-HG10 //



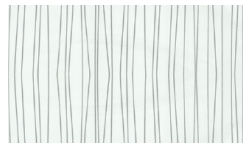
HT-HG11 //



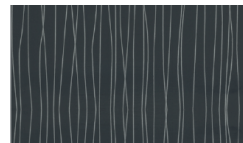
HT-HG12 //



HT-HG13 //



HT-HG14 //



HT-HG15 //

PAVEMENT



HT-TD01 //



HT-TD02 //



HT-TD03 //

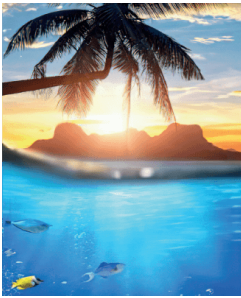


HT-TD04 //



HT-TD05 //

GLASS DJITAL PRINT



HT - Z01 //



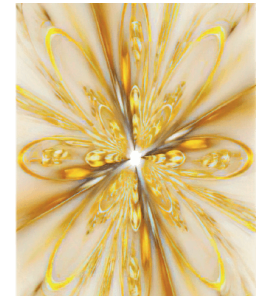
HT - Z02 //



HT - Z03 //



HT - Z04 //



HT - Z05 //



HT - Z06 //



HT - Z07 //



HT - Z08 //



HT - Z09 //



HT - Z10 //



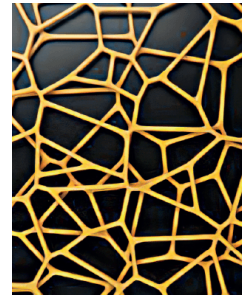
HT - Z11 //



HT - Z12 //



HT - Z13 //



HT - Z14 //



HT - Z15 //



HT - Z16 //



HT - Z17 //



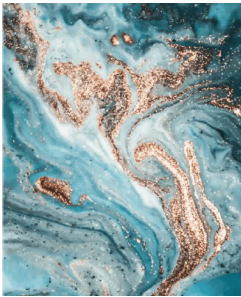
HT - Z18 //



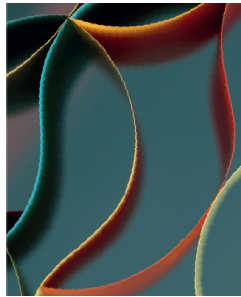
HT - Z19 //



HT - Z20 //



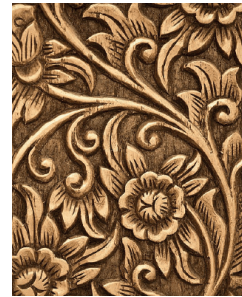
HT - Z21 //



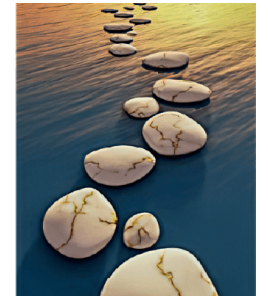
HT - Z22 //



HT - Z23 //



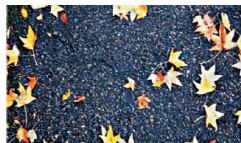
HT - Z24 //



HT - Z25 //



HT - Z26 //



HT - Z27 //



HT - Z28 //

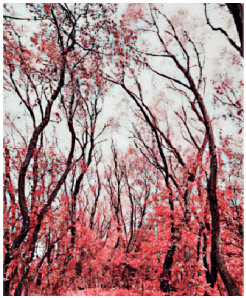


HT - Z29 //



HT - Z30 //

GLASS DJITAL PRINT



HT - Z31 //



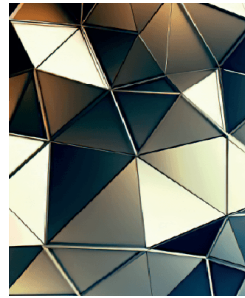
HT - Z32 //



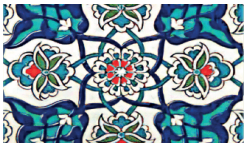
HT - Z33 //



HT - Z34 //



HT - Z35 //



HT - Z36 //



HT - Z37 //



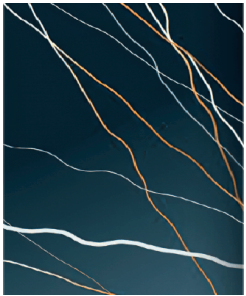
HT - Z38 //



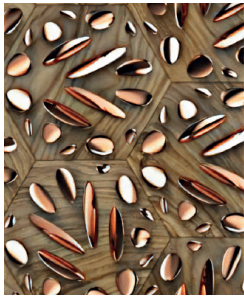
HT - Z39 //



HT - Z40 //



HT - Z41 //



HT - Z42 //



HT - Z43 //



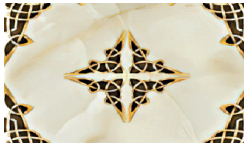
HT - Z44 //



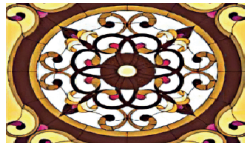
HT - Z45 //



HT - Z46 //



HT - Z47 //



HT - Z48 //



HT - Z49 //



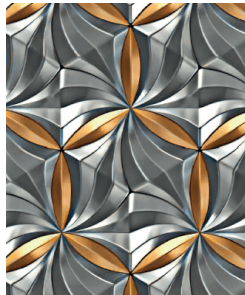
HT - Z50 //



HT - Z51 //



HT - Z52 //



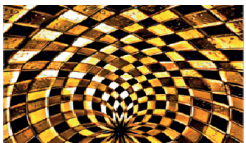
HT - Z53 //



HT - Z54 //



HT - Z55 //



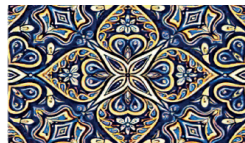
HT - Z56 //



HT - Z57 //



HT - Z58 //



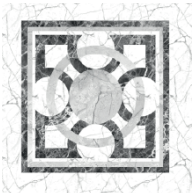
HT - Z59 //



HT - Z60 //



PVC



HT-AEZ149 //



HT-AEZ150 //



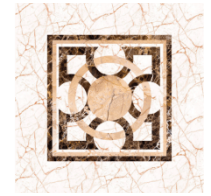
HT-AEZ151 //



HT-AEZ152 //



HT-AEZ153 //

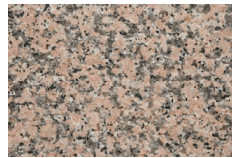


HT-AEZ154 //

GRANIT



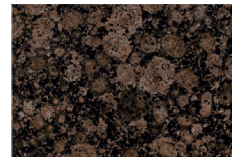
G-102 //



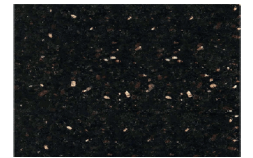
G-103 //



G-104 //

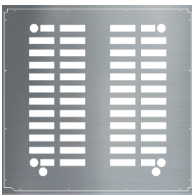


G-105 //



G-106 //

CEILLING



HT-TC01 //



HT-TC02 //



HT-TC03 //



HT-TC04 //



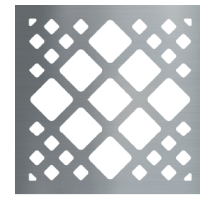
HT-TC05 //



HT-TC06 //



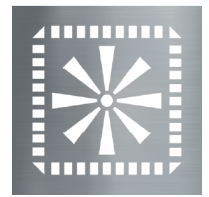
HT-TC07 //



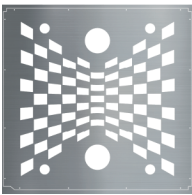
HT-TC08 //



HT-TC09 //



HT-TC10 //



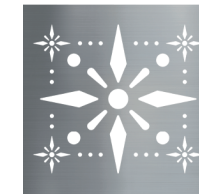
HT-TC11 //



HT-TC12 //



HT-TC13 //



HT-TC14 //



HT-TC15 //



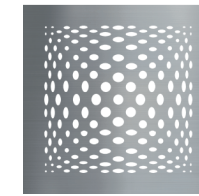
HT-TC16 //



HT-TC17 //



HT-TC18 //



HT-TC19 //



HT-TC20 //



GLASS DJITAL PRINT



HT-SC-01 //



HT-SC-02 //



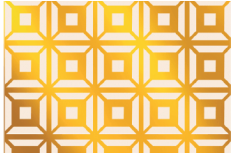
HT-SC-03 //



HT-SC-04 //



HT-SC-05 //



HT-SC-06 //



HT-SC-07 //



HT-SC-08 //



HT-SC-09 //



HT-SC-10 //



HT-SC-11 //



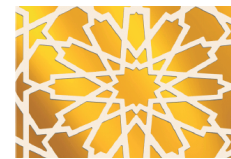
HT-SC-12 //



HT-SC-13 //



HT-SC-14 //



HT-SC-15 //



HT-SC-16 //



HT-SC-17 //



HT-SC-18 //



HT-SC-19 //



HT-SC-20 //



HT-SC-21 //



HT-SC-22 //



HT-SC-23 //



HT-SC-24 //



HT-SC-25 //



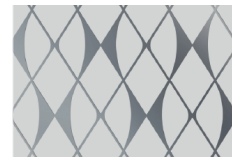
HT-SC-26 //



HT-SC-27 //



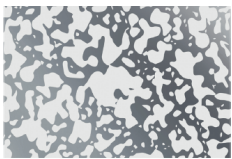
HT-SC-28 //



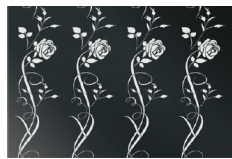
HT-SC-29 //



HT-SC-30 //



HT-SC-31 //



HT-SC-32 //



HT-SC-33 //



HT-SC-34 //



HT-SC-35 //



HT-SC-36 //



HT-SC-37 //



HT-SC-38 //



HT-SC-39 //



HT-SC-40 //

ELEVATOR SYSTEMS

P R O D U C T C A T A L O G



SCAN THE
QR CODE

www.hatemlift.com



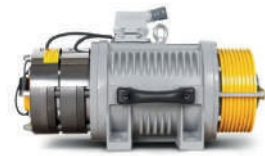
Akar - Engine



Akış - Engine



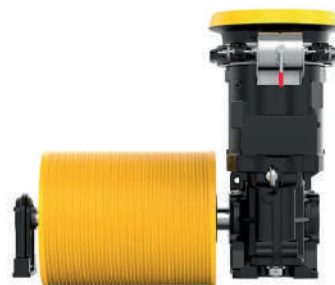
Alberto Sassi - Engine



Eker - Engine



Montanari - Engine



Sicor - Engine



CONTROL PANELS



asronik
ASANSÖR KUVVANDA SİSTEMLERİ

ARK - Pano



ARKEL

ARL / Pano



HEDEFSAN

HDS - Pano



KONEL

KNL - Pano



mikrolift

MRL - Pano



ARKEL

Arcode Ready Installation



BUTTON

PRODUCT CATALOG



SCAN THE
QR CODE

www.hatemlift.com

BUTTONS / LOP MODELS

BUTKON®



Zamak



Yakamoz



Venus



Truva



Tas



Flush Mounted Pin



Flush Mounted Screw



Penta



Moon



Galaxy



Standart



Flush Mounted Buttoned Glass



BUTTONS



Flush Mounted Touch



Alize



Touch Glass Panel (Non-Digital - Single Button - Black)



Touch Glass Panel (Digital - Single Button - White)



Touch Glass Panel (Digital - Single Button - Black)



Touch Glass Panel (Non-Digital - Double Button - Black)

BUTKON[®]

ROSE SATINE



SUPER MIRROR



SATINE



BLACK MIRROR



BLACK SATINE



YELLOW MIRROR



YELLOW SATINE



BRONZE MIRROR



BRONZE SATINE



ROSE MIRROR



7-SEGMENT



DOT-MATRIX



LCD



TFT



BUTTONS / COP MODELS



STANDART-Full height
Flush mounted



STANDART-Half height
Flush mounted



YAKAMOZ- Full Height
Surface Mounted



YAKAMOZ- Half Height
Surface Mounted



TRUVA- Full Height
Surface Mounted



TRUVA- Half Height
Surface Mounted



Galaxy-Half Height
(Black)



Galaxy- Full Height
(Steel-Black)



Galaxy-Half Height
(White)



Galaxy- Full Height
(White)



BUTTONS / BUTTON GLASS



Flush Mounted Glass Button Panel (Full-Length - Black)



Flush Mounted Glass Button Panel (Full-Length - White)



Flush Mounted Glass Button Panel (Half-Length - Black)



Flush Mounted Glass Button Panel (Half-Length - White)



Flush Mounted Glass Button Panel (Full-Length - Black)

RFID CARD ACCESS SYSTEMS



Yakamoz (Card Access - Digital Free)



Truva (Card Access - Digital Free)



Butkon (Card Access - Digital Free)



Butkon (Card Access - Digital)

YELLOW MIRROR



YELLOW SATINE



BRONZE MIRROR



BRONZE SATINE



ROSE MIRROR



ROSE SATINE



SUPER MIRROR



SATINE



BLACK MIRROR



BLACK SATINE



7-SEGMENT



DOT-MATRIX



LCD



TFT



DOORS

PRODUCT CATALOG



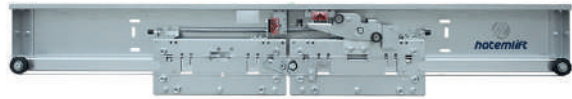
SCAN THE
QR CODE

 www.hatemlift.com

DOORS



2 PANELS TELESCOPIC LANDING MECHANISM



2 PANELS CENTRAL LANDING MECHANISM



2 PANELS TELESCOPIC CABINET MECHANISM



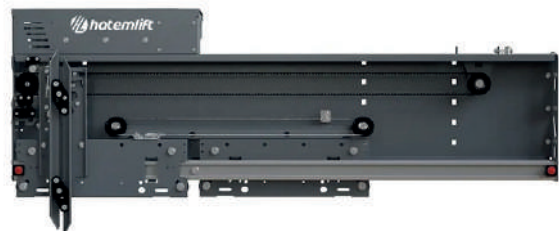
2 PANELS CENTRAL CABINET MECHANISM



2 PANELS TELESCOPIC CABINET MECHANISM



TELESCOPIC 2 PANEL LANDING DOOR



TELESCOPIC 2 PANEL CABIN DOOR



DOORS

Fermator



COMPACT



ELITE



PREMIUM



COMPACT PM



ELITE PM



PREMIUM PM



HYDRA



HYDRA PLUS

MANUAL DOORS



SW1100 //



SW1200 //



SW1300 //



SW1400 //



SW1500 //



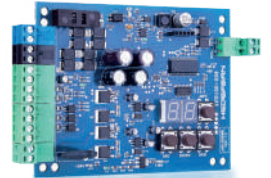
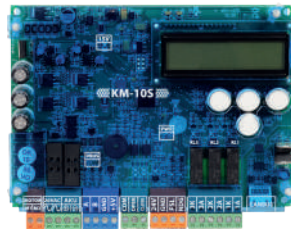
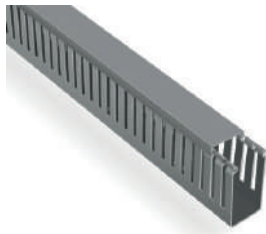
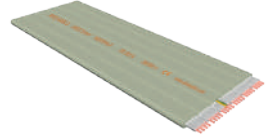
SW1600 //



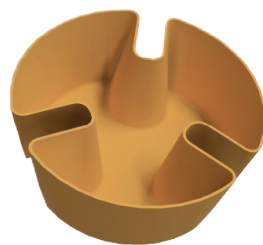
SW1700 //



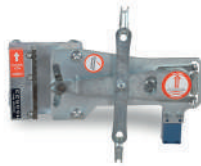
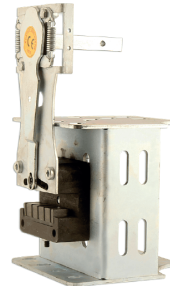
SPARE PARTS / ELECTRONIC



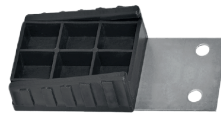
SPARE PARTS / MECHANICAL



SPARE PARTS / MECHANICAL



SPARE PARTS / MECHANICAL





" is the official trade marketing
company of



**Exportation to all corners of the
WORLD**



www.hatemlift.com





hatemlift

MEGA TION

Hatem Lift GROUP -HEAD OFFICE

Fevziçakmak, 10756.sk NO:1/R, 42050
Karatay/KONYA/TURKEY

+90 (332) 501 54 54

+90 (332) 501 54 54

sales@hatemlft.com



**THANK YOU
FOR YOUR TIME**